



JEROME COUNTY

Idaho

Jerome County Airport (JER)

Airport Master Plan Update Introduction
September 7, 2021



J-U-B ENGINEERS, INC.



THE
LANGDON
GROUP
a J-U-B Company



GATEWAY
MAPPING
INC.
a J-U-B Company

OTHER J-U-B COMPANIES

AGENDA

Team Introductions



Master Plan Process and Schedule



Project Team and Responsibilities



Public Involvement

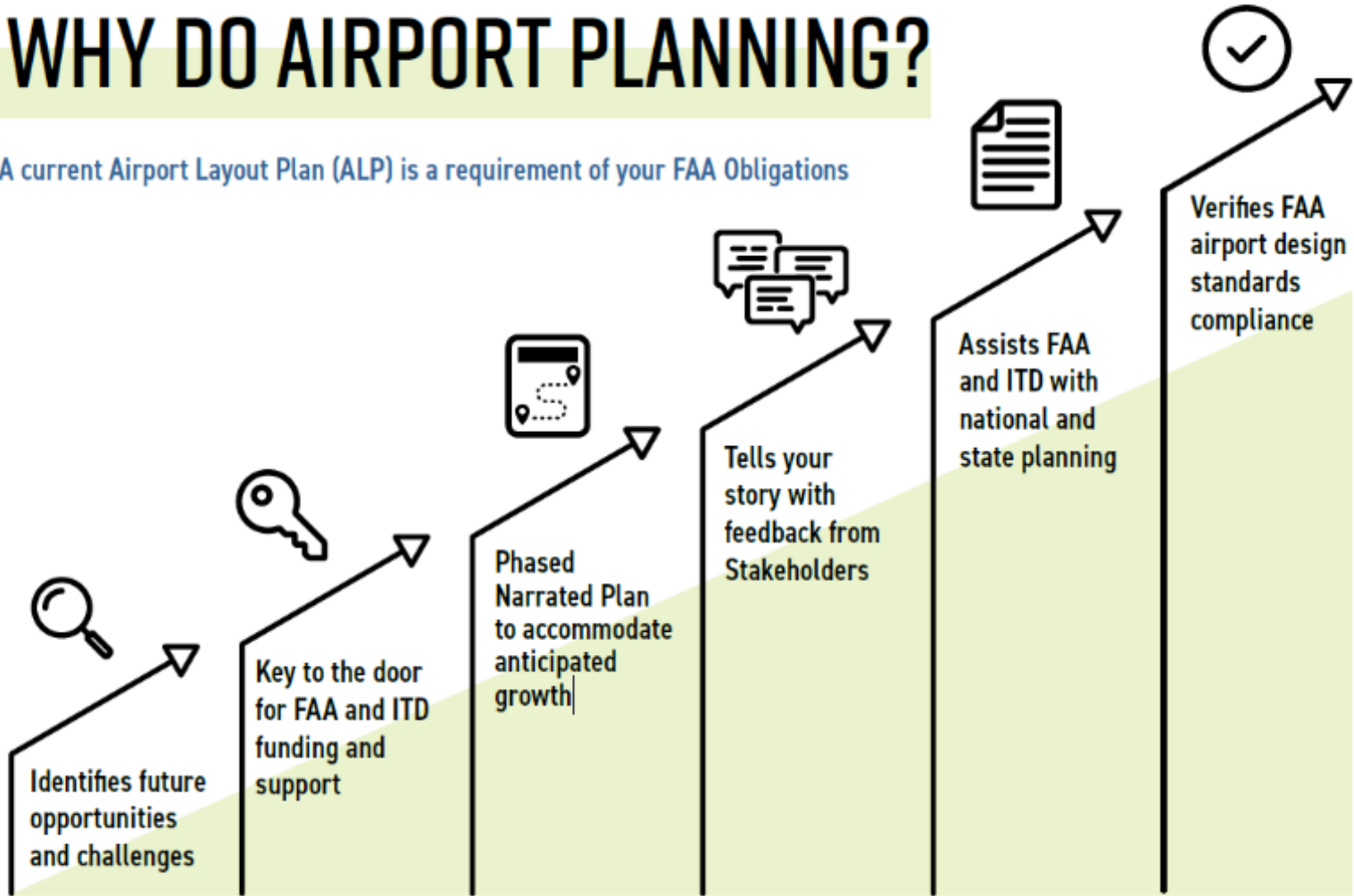


Next Steps and Questions

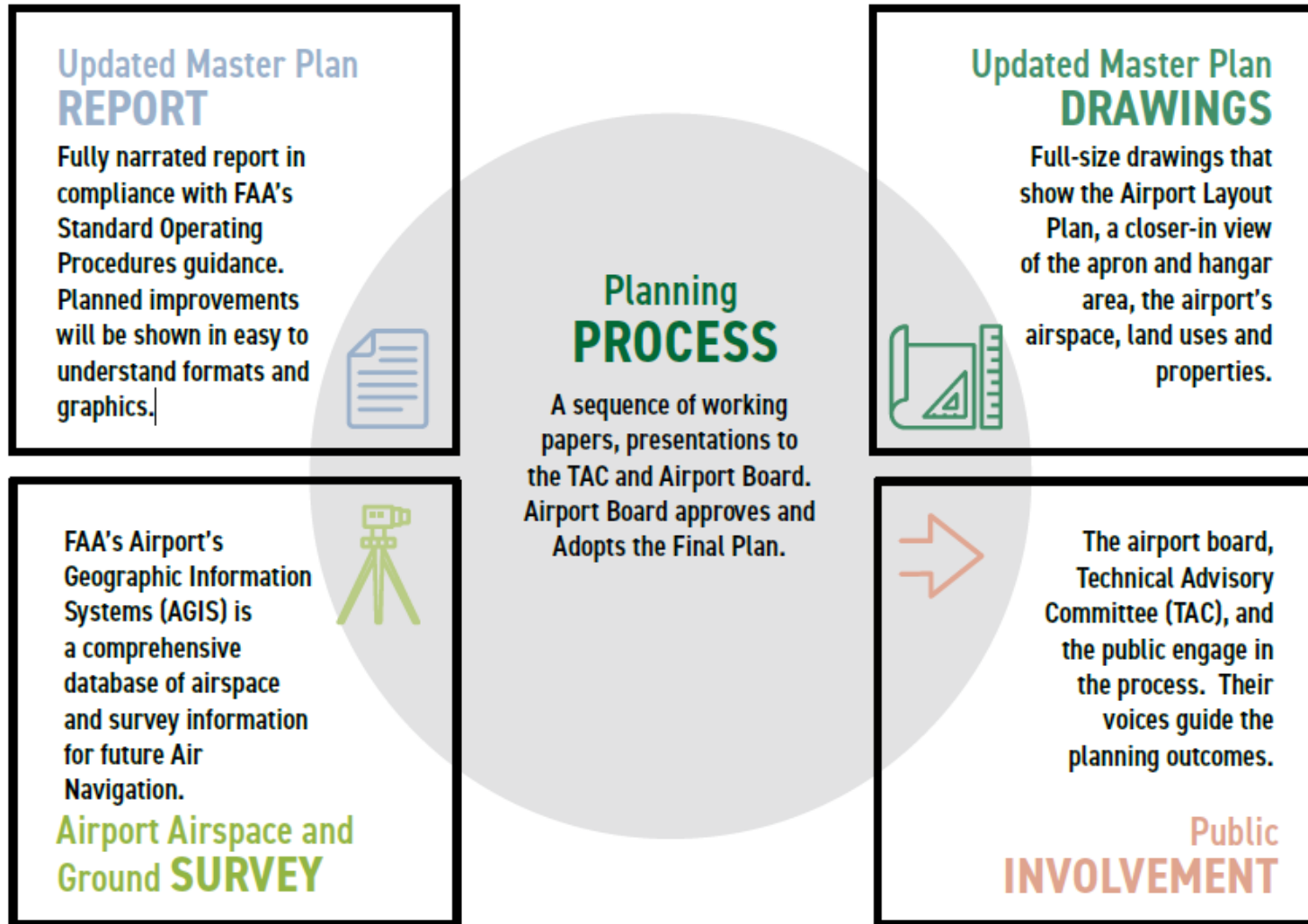
WHY DO AIRPORT PLANNING?

WHY DO AIRPORT PLANNING?

A current Airport Layout Plan (ALP) is a requirement of your FAA Obligations



WHAT DO WE GET FROM THIS PROCESS?



PLAN FOR KEY ISSUES



- Survey Ground Control
- Flight and Ortho Imagery Acquisition
- Obstacle Survey
- Drawing and Exhibit Creation



PROJECT DELIVERABLES



WORKING PAPER 1

- ✓ Study Initiation
- ✓ Public Involvement/
Stakeholder Coordination
- ✓ Aviation Inventory and
Existing Conditions
- ✓ Environmental Baseline
- ✓ Aviation Forecasts



WORKING PAPER 2

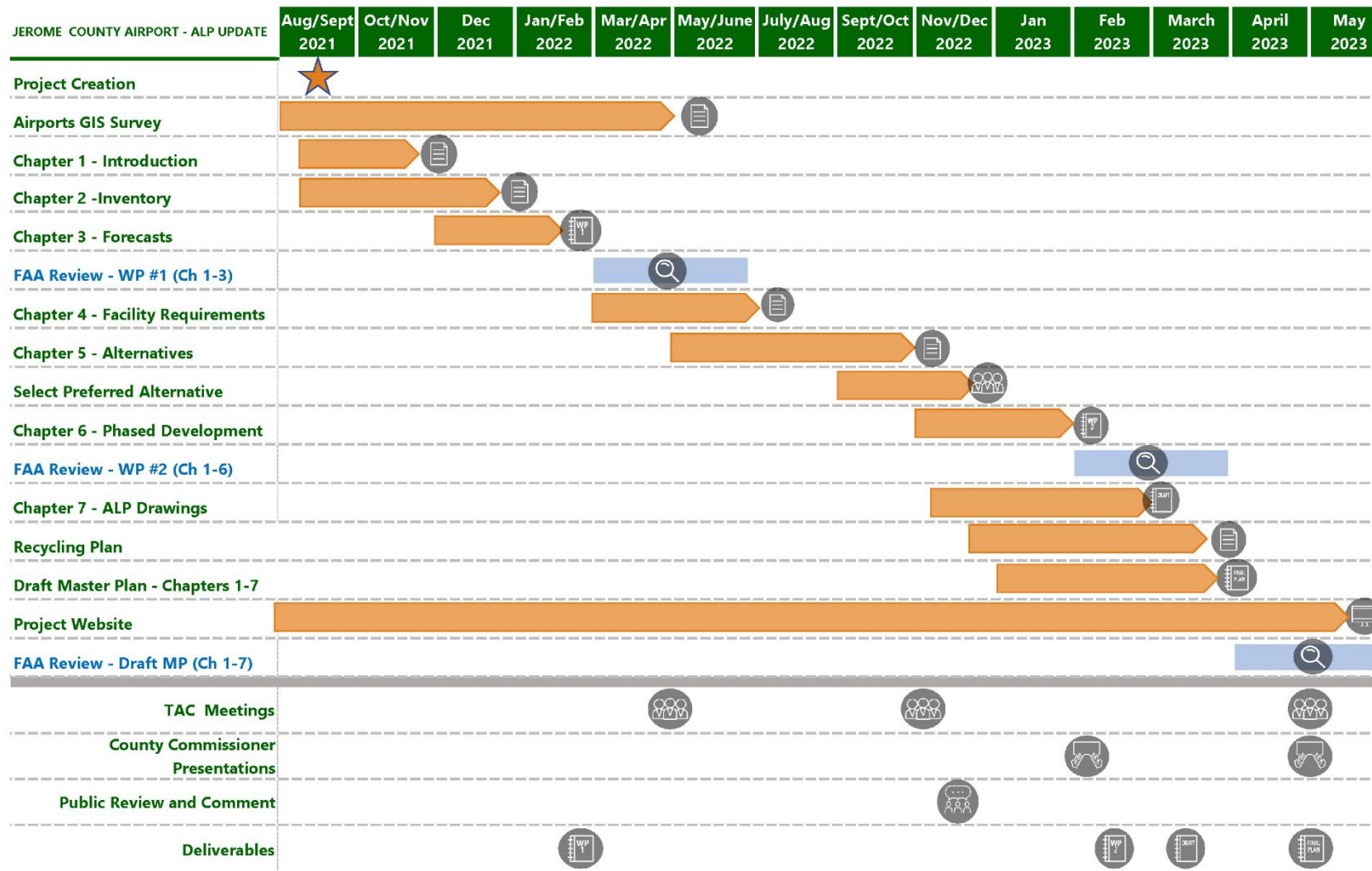
- ✓ Facility Requirements
- ✓ Alternatives and
Development Evaluation
- ✓ Selection of Preferred
Alternative



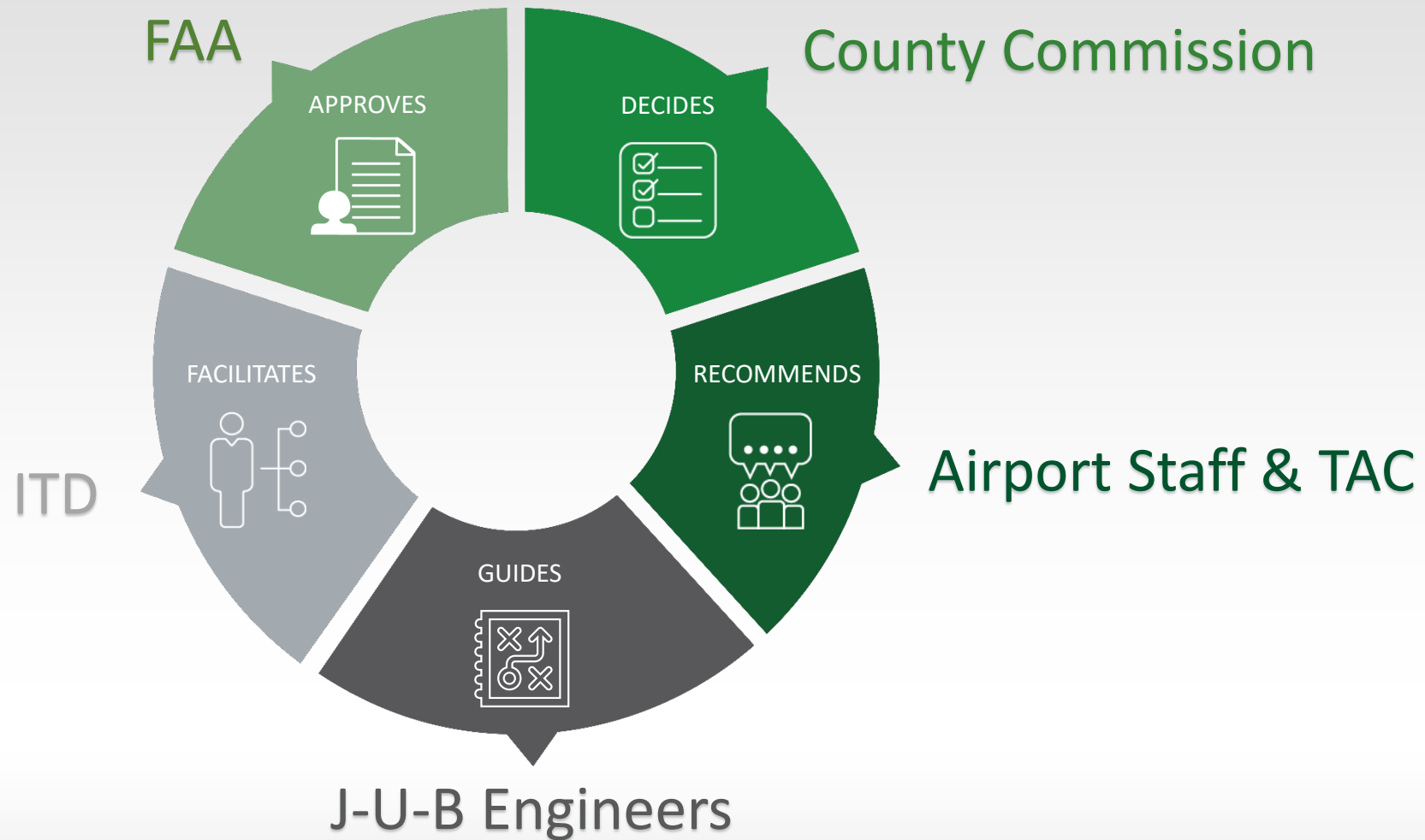
FINAL PRODUCT

- ✓ Facilities Implementation
Plan
- ✓ Updated Airport Master
Plan Narrative
- ✓ Updated Airport Layout
Plans
- ✓ Recycling Plan

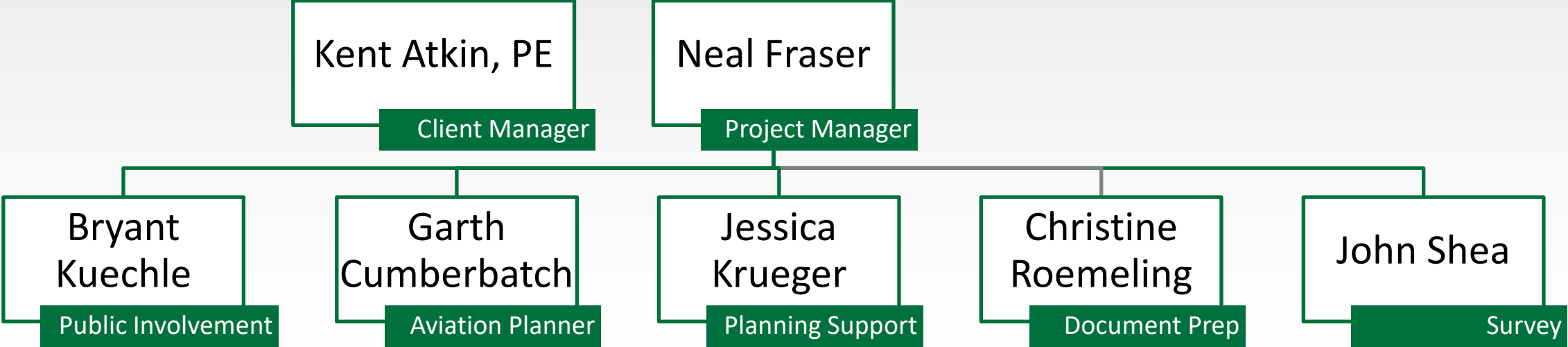
PROJECT SCHEDULE



WHO DOES WHAT?



J-U-B TEAM



PUBLIC INVOLVEMENT OVERVIEW

The Langdon Group

- Specializes in public education and outreach
- Focused on process, not outcome

Involvement



- TAC
- Stakeholder interviews
- Open Houses (2)
- Presentations to County Commission

Materials

- Meeting Materials and Logistics
- Public Involvement Post-Project Report



ROLE OF THE TECHNICAL ADVISORY COMMITTEE (TAC)

What is it?

- Advisory board to the County
- Liaisons between the community and County

What do members do?

- Exchanges different ideas and perspectives
- Takes community benefits into consideration
- Works together to provide recommendations that meets the needs and interests of all parties

TAC MEMBER RECOMMENDATIONS



Who are we missing?

STAKEHOLDER INTERVIEWS

Question Themes

- What is the Airport's role in the community?
- How do you use or interface with the Airport?
- Could future growth and expansion at the Airport be beneficial?
- What is needed at the Airport?

STAKEHOLDER RECOMMENDATIONS

- John Lane — Restoration Business Owner
- Scott Jackson – Pilot
- Larry Hall — Chamber of Commerce
- Melissa Barry — South Central Idaho Tourism and Recreation Association
- City of Jerome Representative
- Crop Duster Representative
- Dairy Business Representative
- Meat Processing Plant Representative
- Life flight Representative
- Neighboring property owners
- Sheriff's Office



Who should we interview?

PROJECT WEBSITE

<https://jermasterplan.jub.com>



Welcome to the Jerome County Airport Master Plan.

Over the coming months the Airport will evaluate the overall facilities and surrounding environment of the airport and seek input for future plans. Information about the project, the process, and the documents created will be updated on this page as the County moves through the Master Planning effort.

[Master Plan Future Use Survey](#)

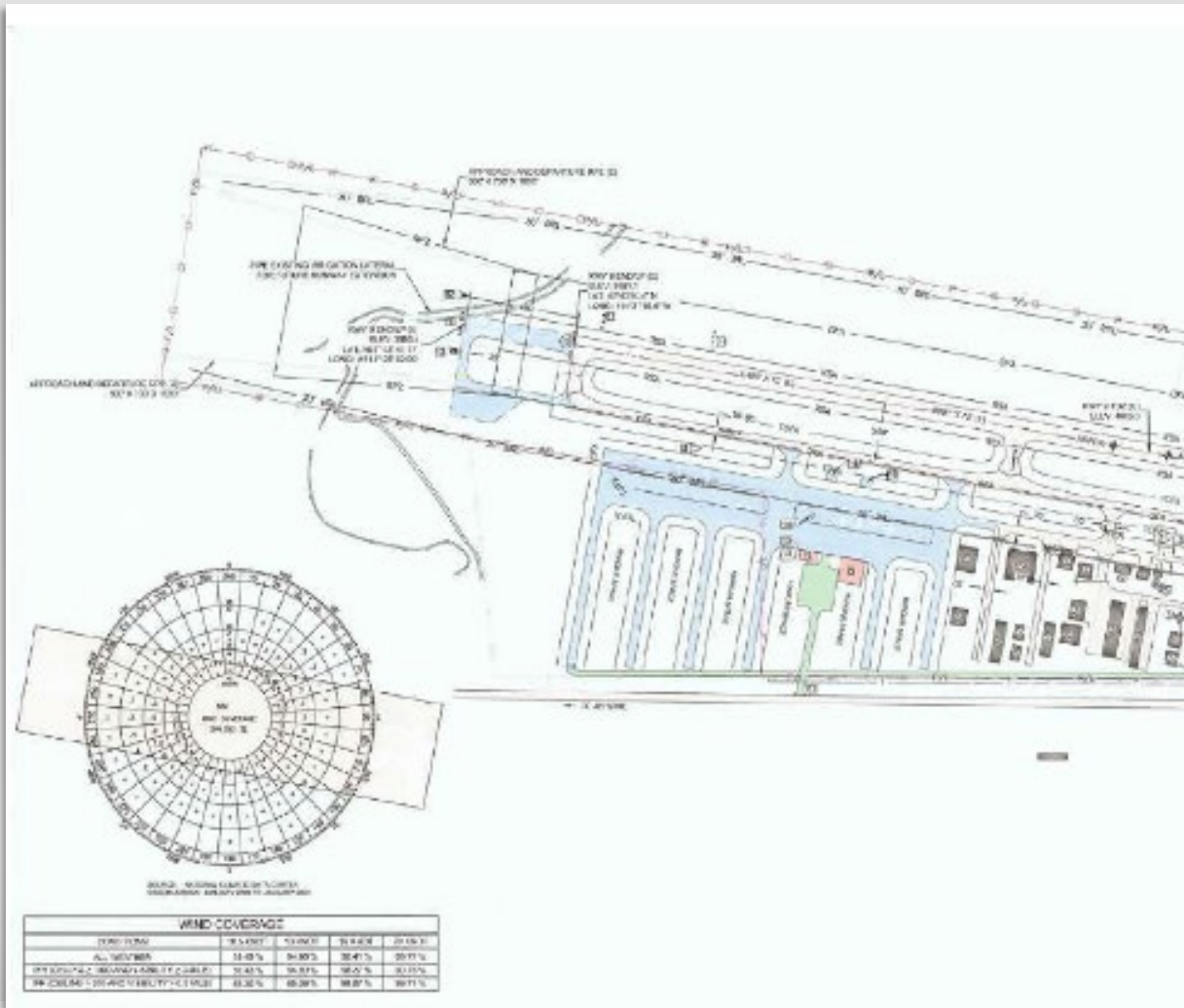
[Master Plan Technical Advisory Kickoff Meeting Presentation](#)

If you have comments, ideas, or questions concerning the future of the Jerome County Airport, please contact the project representative or the airport manager

[Contact Information](#)

INVENTORY & FORECASTING

Records	FAA 5010, leases, personal income, per capita personal income
Fuel	Historic fuel sales inventory
Operations	Historical data, game camera images, fuel sales, TAF, TFMSC
Based Aircraft	basedaircraft.com
Potential Users	Future operations
Specific Users Past and Future Operations	Historical and future operations



NEXT STEPS



Environmental Baseline Review